



J O U R N E Y M A N
I N T E R N A T I O N A L

JI + AIA

Emerging Professionals Program Proposal



JI+ AIA Emerging Professionals Program

Introduction

Journeyman International and AIA are collaborating to create opportunities for emerging professionals (also referred to as interns) to earn hours in IDP core areas outside of the workplace. In the JI Emerging Professional Program (EPP), interns will work on real projects, with real clients in some of the poorest countries in the world. Among other tasks, interns will have the opportunity to transform schematics and initial renderings into construction documents on facilities ranging from schools to orphanages.

Partners

Journeyman International (JI) is a 501(c)3 non profit that provides architectural services to humanitarian organizations worldwide. JI's innovative model was developed in 2009 by undergraduate architecture and construction management students and today still relies on these demographics to produce sustainable designs to communities that need them most.

The **American Institute of Architects (AIA)** is a professional organization for architects in the United States. Headquartered in Washington, D.C., the AIA offers education, government advocacy, community redevelopment, and public outreach to support the architecture profession and improve its public image. The AIA also works with other members of the design and construction team to help coordinate the building industry.

IDP

Hours: According to the IDP guidelines, interns can obtain 40 hours maximum per experience area (except Leadership and Service) totaling 640 hours through Community-Based Design Center/Collaborative for volunteer service in support of a pre-approved charitable organization. Journeyman International has been pre-approved by NCARB and is thus eligible to award interns with hours in all 16 eligible experience areas.

Supervisors: An IDP supervisor is the individual who supervises the intern on a daily basis. JI has licensed architects on staff to supervise the intern during their enrollment in the EPP. The interns also have the option to reach out to their employer to act as supervisor for the duration of the project as well should the employer want to be involved. The IDP supervisor is required to certify that the information submitted in the experience report is true, correct and the work is performed competently.

Because JI is a Community-Based Design Center/Collaborative, staff members who are professionals in other disciplines (ie: structural engineering, construction management, etc.) will be able to supervise hours in certain experience settings.



JOURNEYMAN INTERNATIONAL

Expectations

Scope of Work

Experience: Interns will work with the JI team to ensure that their experience in the EPP fulfills their specific needs in NCARB category S, and potentially categories A and O (talk to the JI staff to discuss). Opportunities to obtain experiences in construction cost, engineering systems, project management, construction administration will also be available on a project by project basis.

Hours: Interns will be required to work a minimum of 8 hours per week dependent upon the scale and timeline of the project as described by the client. Interns will be placed on a project that matches well with their schedule and interest level.

Quality: JI provides sustainable design and construction methods that follow California building code to global communities. All staff, designers and interns are held to professional standards. The client's design needs and timeline should be prioritized and upheld. All designs/construction documents will be thoroughly checked by our staff of professional architects, engineers and contractors regularly in order to ensure that projects are economically, environmentally and socially feasible.

Investment: All stakeholders in JI programs are required to pay a design fee. This is to make sure that projects are completed effectively and efficiently. All interns will be required to pay a \$100 design fee covering the design handbook, project supervision and administrative costs.

Client

Clients (typically humanitarian non profits like the Red Cross) are responsible for 100% of construction costs. They have agreed in a formal contract to work closely and efficiently with the design team, including these interns. Clients must have reliable communications sources, be financially stable and have local community partners that will aid with construction and programmatic needs.

Project

Each JI project is vetted prior to being considered as a Journeyman International project. Each project must be financially and programmatically feasible. The client must have at least half of the funds needed for construction raised prior to design. The project must be located in a developing country and cater to an underserved population. Past projects have ranged in budget from \$10,000 to \$40 million with designs lasting anywhere from one to nine months. Depending on the clients needs, the construction documents completed by the intern should be completed between one and three months.

Work Already Accomplished

Each Journeyman International project is typically first designed by an undergraduate architecture student at a U.S. university. These students work on design for nine months; starting with research (three months), then schematic design (three months) and into final design (three months). The student begins the project in September and travels to the site either in January or June.



Travel

If an intern is assigned to the construction documents prior to the site visit, they will be encouraged to travel to the site with the student, JI staff and/or supervisors. Opportunities to travel will exist throughout design development and construction on the project.

Reporting

Regardless of the intern's supervisor (JI staff or other), the interns will need to submit their progress reports weekly. All experience hours must be submitted online through the online reporting system. Interns must submit all experience including supplemental experience in reporting periods of no longer than six months and within two months of completion of each reporting period.

Application to the JI Emerging Professional Program

Applications for the EPP will be found at www.journeymaninternational.org and individual AIA chapters Emerging Professionals page (yet to be created). All interns will be judged based on their past education and work experiences. Interns will be required to submit a current resume and portfolio, expected availability and information regarding their current IDP status; including what areas the interns need experience hours completed in and what have already been fulfilled.

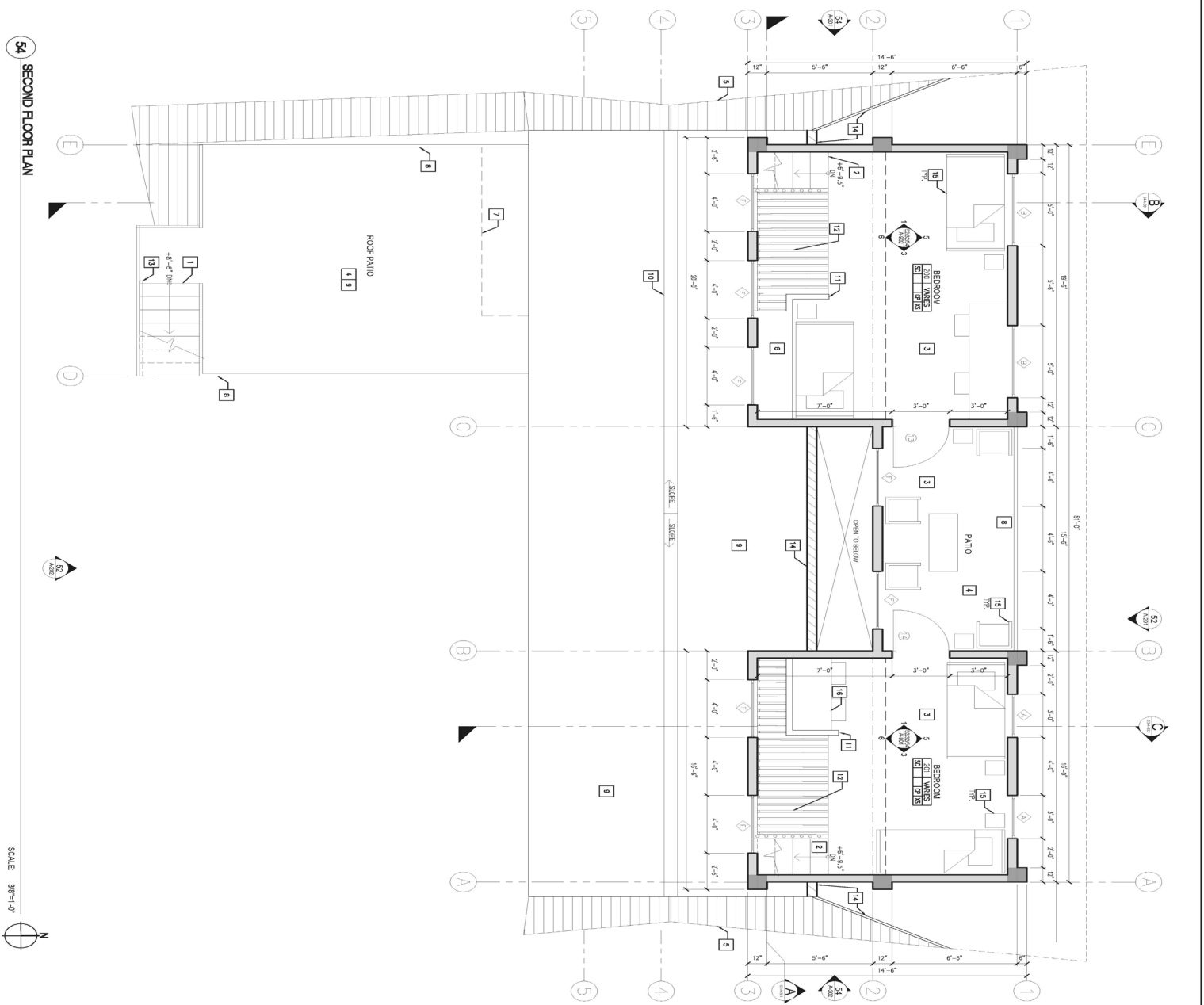
Example of Deliverables

Attached you will find an example of the scope of work that interns will be creating. The document titled Ofelen Lakay is a preliminary design package that was created by a student and given to an intern. This intern was then responsible for creating the document called "Haiti Plan Set".



JOURNEYMAN INTERNATIONAL

54 SECOND FLOOR PLAN



SCALE 3/8"=1'-0"

14 LEGEND

- STRUCTURAL BRICK WALL
- KEVLAR FINISHED WALL
- POURED IN PLACE CONCRETE
- LINE OF WALL ABOVE
- GRID LINE
- LINE OF BEAM ABOVE
- 2' X 2' BLOCK COLUMN
- HANGER STRAPS AND ANCHORS TO SEE WINDOW SCHEDULE SHEET A-100X
- DOOR SWING, AND DOOR TAG SEE WINDOW SCHEDULE SHEET A-100X

13 KEYNOTES

- 1 CONCRETE SHALL BE PLACED IN PLACE. CONTRIBUTION TO VERIFY.
- 2 INTERIOR CONCRETE SHALL TO BE FINISHED IN PLACE.
- 3 FINISHES IN PLACE CONCRETE FLOORS THROUGHOUT UNLESS OTHERWISE NOTED.
- 4 EXTERIOR FINISHES SHALL BE FINISHED TO WATERPROOF.
- 5 EXTERIOR FINISHES SHALL BE FINISHED TO WATERPROOF.
- 6 THE CEILING SHALL BE FINISHED TO CREATE A SMOOTH SURFACE. FINISHES SHALL BE FINISHED TO WATERPROOF.
- 7 THE CEILING SHALL BE FINISHED TO CREATE A SMOOTH SURFACE. FINISHES SHALL BE FINISHED TO WATERPROOF.
- 8 FINISHES SHALL BE FINISHED TO WATERPROOF.
- 9 FINISHES SHALL BE FINISHED TO WATERPROOF.
- 10 FINISHES SHALL BE FINISHED TO WATERPROOF.
- 11 FINISHES SHALL BE FINISHED TO WATERPROOF.
- 12 FINISHES SHALL BE FINISHED TO WATERPROOF.
- 13 FINISHES SHALL BE FINISHED TO WATERPROOF.
- 14 FINISHES SHALL BE FINISHED TO WATERPROOF.

12 GENERAL NOTES

- 1 CONTRACTOR TO VERIFY EXISTING SITE CONDITIONS PRIOR TO START CONSTRUCTION.
- 2 FINISHES, MATERIALS, AND EQUIPMENT ARE SUGGESTIONS AND DO NOT CONSTITUTE A WARRANTY. CONTRACTOR SHALL VERIFY ALL FINISHES, MATERIALS, AND EQUIPMENT.
- 3 CONTRACTOR SHALL VERIFY ALL FINISHES, MATERIALS, AND EQUIPMENT.
- 4 CONTRACTOR SHALL VERIFY ALL FINISHES, MATERIALS, AND EQUIPMENT.
- 5 CONTRACTOR SHALL VERIFY ALL FINISHES, MATERIALS, AND EQUIPMENT.
- 6 CONTRACTOR SHALL VERIFY ALL FINISHES, MATERIALS, AND EQUIPMENT.
- 7 CONTRACTOR SHALL VERIFY ALL FINISHES, MATERIALS, AND EQUIPMENT.
- 8 CONTRACTOR SHALL VERIFY ALL FINISHES, MATERIALS, AND EQUIPMENT.
- 9 CONTRACTOR SHALL VERIFY ALL FINISHES, MATERIALS, AND EQUIPMENT.
- 10 CONTRACTOR SHALL VERIFY ALL FINISHES, MATERIALS, AND EQUIPMENT.
- 11 CONTRACTOR SHALL VERIFY ALL FINISHES, MATERIALS, AND EQUIPMENT.
- 12 CONTRACTOR SHALL VERIFY ALL FINISHES, MATERIALS, AND EQUIPMENT.
- 13 CONTRACTOR SHALL VERIFY ALL FINISHES, MATERIALS, AND EQUIPMENT.
- 14 CONTRACTOR SHALL VERIFY ALL FINISHES, MATERIALS, AND EQUIPMENT.

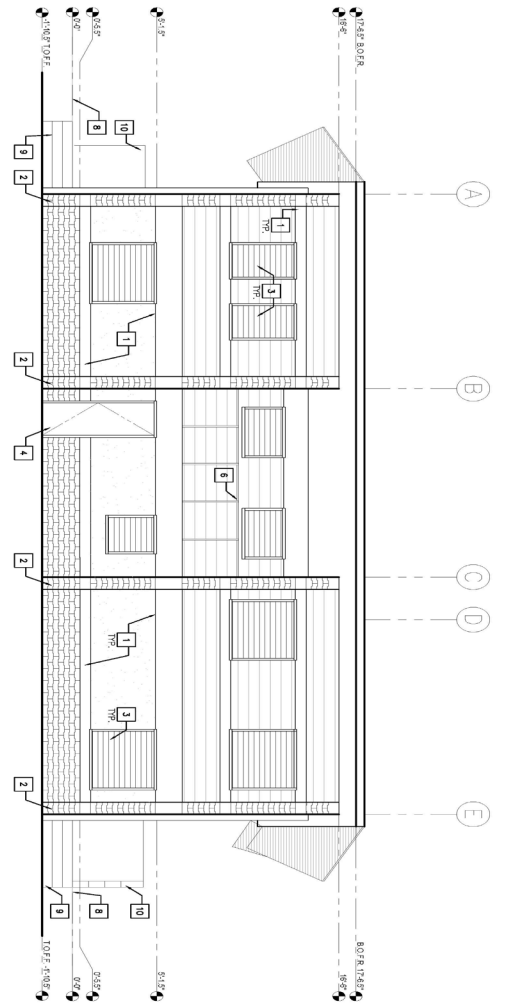
11 ROOM FINISH KEY

ROOM NAME	FINISH KEY
CONCRETE	1
CEILING	2
FLOOR	3
WALL	4
WALL FINISHES	5
WALL COLORED FINISHES	6
WALL FINISHES (SEE SECTION C ON SHEET A-100)	7
WALL FINISHES (SEE SECTION C ON SHEET A-100)	8
WALL FINISHES (SEE SECTION C ON SHEET A-100)	9
WALL FINISHES (SEE SECTION C ON SHEET A-100)	10
WALL FINISHES (SEE SECTION C ON SHEET A-100)	11
WALL FINISHES (SEE SECTION C ON SHEET A-100)	12
WALL FINISHES (SEE SECTION C ON SHEET A-100)	13
WALL FINISHES (SEE SECTION C ON SHEET A-100)	14

<p>CLIENT Child Hope International 1225 Coast Village Rd Suite C SANTA BARBARA, CA 93108</p>	<p>PROJECT Olefin Lobby Overhang Child Hope International KENSICOTT HALL</p>	<p>DATE 12/10/2019</p>	<p>DESIGNER DROBIE</p>	<p>PROJECT NUMBER 400</p>	<p>CONTRACTOR CONSCIOUSBUILD INC 1270 GARDEN ST SANTA BARBARA, CA 93101</p>
<p>SHEET TITLE SECOND FLOOR PLAN</p>					
<p>SCALE 3/8"=1'-0"</p>					
<p>PROJECT NUMBER A-102</p>					

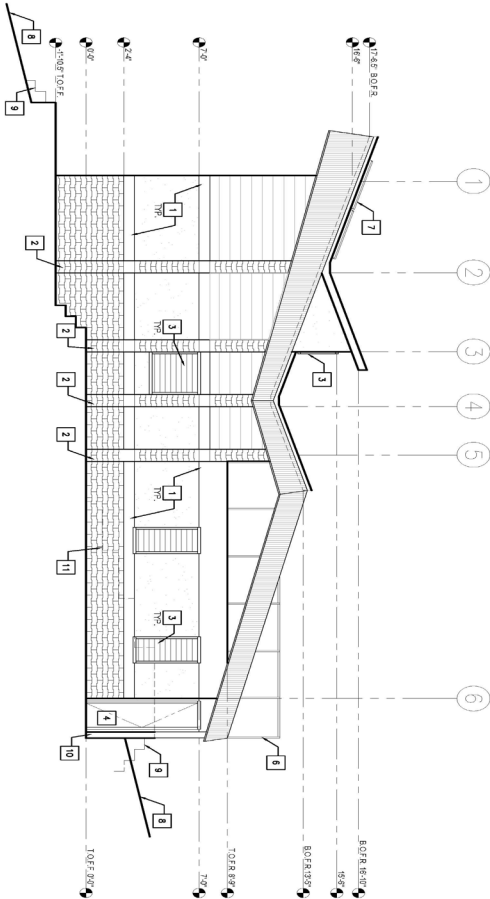


JOURNEYMAN INTERNATIONAL



51 NORTH ELEVATION

SCALE: 1/4"=1'-0"



52 WEST ELEVATION

SCALE: 1/4"=1'-0"

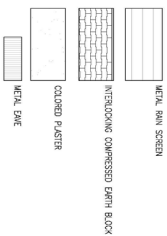
11 NOT USED

1) CONTRACTOR TO VERIFY EXISTING CONDITIONS PRIOR TO START OF CONTRIBUTION.

12 GENERAL NOTES

- 1) FINISHED IN PLACE CONCRETE TO BE POURED CONCURRENTLY WITH THE POURING OF VERTICAL BRICK REINFORCEMENT.
- 2) INTERLOCKING COMPRESSED PATTERN BLOCK COLUMN TO BE Laid IN ACCORDANCE WITH MANUFACTURER'S INSTRUCTIONS. SEE ELECTRICAL DRAWINGS SHEET A-100X FOR STRUCTURAL DRAWINGS SHEET A-100X.
- 3) EXTERIOR WINDOW. SEE WINDOW SCHEDULE DETAIL M/A-1-XXX.
- 4) EXTERIOR DOOR. SEE DOOR SCHEDULE DETAIL M/A-1-XXX.
- 5) NOT USED.
- 6) 4" METAL GUTTER, WITH METAL WASH TRAY. SEE DETAIL M/A-1-XXX.
- 7) PHOTOVOLTAIC PANEL ARRAY. SEE ELECTRICAL DRAWINGS.
- 8) APPROXIMATE LINE OF GRADE. CONTRACTOR TO VERIFY.
- 9) FINISHED IN PLACE CONCRETE SLABS. CONTRACTOR TO VERIFY.
- 10) RETAINING WALL. CONTRACTOR TO VERIFY.
- 11) LINE OF RETAINING WALL. IN FOREGROUND. CONTRACTOR TO VERIFY.

13 KERNOTES



14 LEGEND

CONSCIOUSBUILD
CONSCIOUSBUILD, INC.
1251 GARDEN ST.
SAN LUIS OBISPO, CA 93108

These drawings are the property of Journeyman International. No part of these drawings may be reproduced, stored in a retrieval system, or transmitted in any form or by any means, electronic, mechanical, photocopying, recording, or by any information storage and retrieval system, without the prior written permission of Journeyman International, Inc. Copyright © 2012

DATE

FINANCE
Olefin Lacey Organize
Olefin Hope International
KENSICOFF-HALLI

CLIENT
Child Hope International
1225 Coast Village Rd. Suite C
SANTA BARBARA, CA 93108

SHEET TITLE
ELEVATIONS

DATE

DESIGNER: PROHATE

PROJECT NUMBER: 401

DRAWN BY: GABRIEL

SHEET NUMBER: A-201